

## Polyethylene Perspectives

A closer look at the latest solutions, products and events featuring polyethylene

tomorrow's  
performance  
today

Issue 20 | August 2022

[Subscribe now](#)

**Register for Performance Polymers Innovation Week; 8 live webinars!**

Performance Polymers  
Innovation Week  
September 27-29, 2022

[Register today](#)

We invite you to our online event to see the products, understand the technologies and hear the trends that will help shape the future of the plastics industry. There will be sufficient time for sessions to conclude and allow attendees to log on to the next timeslot.

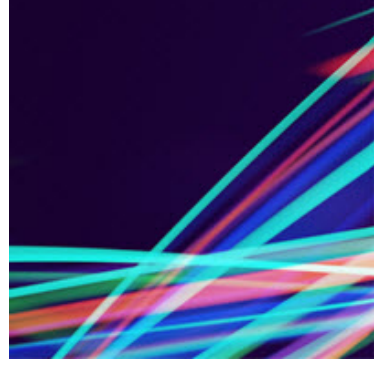
[Register today](#)



### **Innovative solutions Enhance laminated packaging performance with Exceed™ S performance polyethylene**

Exceed S PE grades deliver simplicity without compromise. Now you can get high performance with easy processing; stiffness and toughness with less blending, and resin solutions that simplify operations and improve package durability.

[Read more](#)



### **Industry events Advancing sustainable solutions. Together.**

Meet us at K Fair! We'll be teaming up with our value chain members to demonstrate how our performance polymers are helping our customers create sustainable solutions that are making life better.

[Learn more](#)

Download PE Datasheets

tomorrow's  
performance  
today



### **Case studies Food packaging films that can reduce material use while maintaining performance**

Yihai Kerry Arawana Holdings Co., Ltd. is a leading agricultural and food products' processing enterprise in China. Combining ExxonMobil's innovative performance polymer and application expertise with YiHai Kerry's industry insights led to the successful development of a new generation of vacuum rice bags.

[Read more](#)



### **On-demand webinars Enhancing flexible primary packaging with Exceed™ S performance polyethylene resins**

In one of our recent webinars, we provided an introduction to Exceed S in flexible primary packaging applications. It covered non-laminated coextruded films, PE//PE laminates, hot-filled bag-in-box, and showed why Exceed S PE will enable you to rethink film design.

[Click to view now](#)

## Performance profiles

The latest polyethylene case studies and industry insights from ExxonMobil

tomorrow's  
performance  
today

[Polyethylene Perspectives  
Newsletter archives](#)

[Market Insights  
Newsletter archives](#)

Energy lives here™

[Click to change your subscriptions or unsubscribe](#)

ExxonMobil Chemical | 22777 Springwoods Village Parkway, Spring, Texas 77389

[Terms & Conditions](#) | [Privacy Policy](#)

Please do not reply to this email. Click [Contact Us](#) to reach us.

