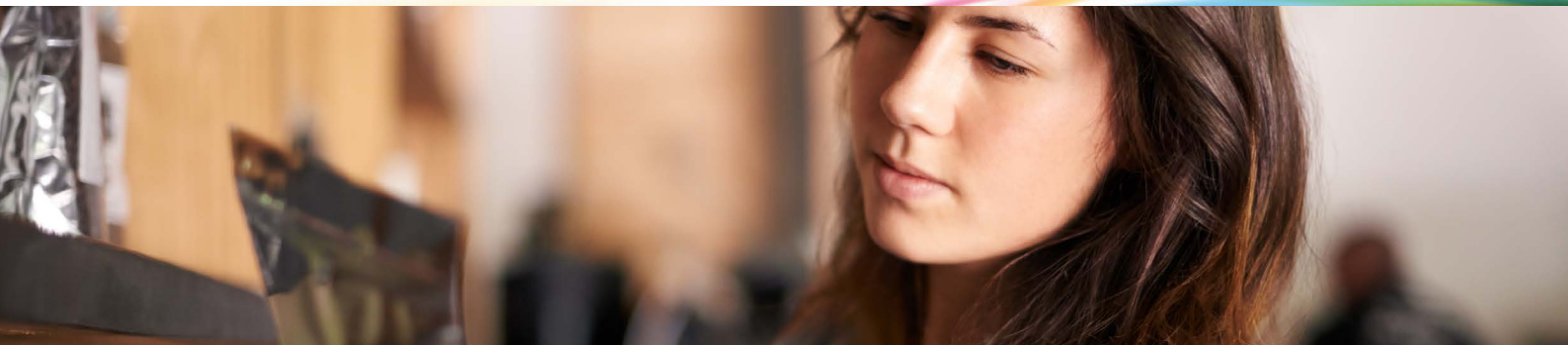




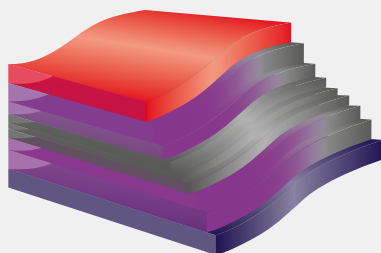
# Extreme performance lamination film leveraging Exxtend™ technology for advanced recycling



## Extreme performance lamination packaging film - 9-layer film structure.

Thickness: 60 µm

- Exceed™ XP 8784ML
- Exceed™ 2012MK
- Exact™ 3237
- ExxonMobil™ LLDPE LL1001
- ExxonMobil™ HDPE HTA108



### Benefits:

- Exxtend technology for Advanced Recycling
- Excellent sealing performance with Exact plastomers
- Good stiffness/toughness balance
- Broad temperature window for sustainable packaging solutions

| Polymer properties         | Exceed XP 8784ML | Exceed 2012MK | Exact 3237 | ExxonMobil LLDPE LL1001 | ExxonMobil HDPE HTA108 | Test method* (based on) | Unit              |
|----------------------------|------------------|---------------|------------|-------------------------|------------------------|-------------------------|-------------------|
| Melt index (190°C/2.16 kg) | 0.80             | 2.0           | 2.0        | 1.0                     | 0.70                   | ASTM D1238              | g/10 min          |
| Density                    | 0.914            | 0.912         | 0.908      | 0.918                   | 0.961                  | ASTM D1505              | g/cm <sup>3</sup> |

\*For detailed product information, please consult the individual grade data sheet, available on our website: [www.exxonmobilchemical.com](http://www.exxonmobilchemical.com)  
 Values given are typical and should not be interpreted as specifications. Data generated by or on behalf of ExxonMobil Chemical.

### Exxtend technology for advanced recycling

Exxtend can help widen the range of plastic materials that can be recycled and helps maintain the performance of material over multiple recycling loops. Product quality and performance of the certified circular polymers are identical to polymers made from virgin raw materials, so customers can be confident when using them in existing applications.

Watch the video:



ExxonMobil  
K2022  
microsite:



Advancing sustainable solutions. Together.

For more information: [exxonmobilchemical.com/pe](http://exxonmobilchemical.com/pe)  
 ExxonMobil Hub: EN11

©2022 ExxonMobil. ExxonMobil, the ExxonMobil logo, the interlocking "X" device and other product or service names used herein are trademarks of ExxonMobil, unless indicated otherwise. This document may not be distributed, displayed, copied or altered without ExxonMobil's prior written authorization. To the extent ExxonMobil authorizes distributing, displaying and/or copying of this document, the user may do so only if the document is unaltered and complete, including all of its headers, footers, disclaimers and other information. You may not copy this document to or reproduce it in whole or in part on a website. ExxonMobil does not guarantee the typical (or other) values. Any data included herein is based upon analysis of representative samples and not the actual product shipped. The information in this document relates only to the named product or materials when not in combination with any other product or materials. We based the information on data believed to be reliable on the date compiled, but we do not represent, warrant, or otherwise guarantee, expressly or impliedly, the merchantability, fitness for a particular purpose, freedom from patent infringement, suitability, accuracy, reliability, or completeness of this information or the products, materials or processes described. The user is solely responsible for all determinations regarding any use of material or product and any process in its territories of interest. We expressly disclaim liability for any loss, damage or injury directly or indirectly suffered or incurred as a result of or related to anyone using or relying on any of the information in this document. This document is not an endorsement of any non-ExxonMobil product or process, and we expressly disclaim any contrary implication. The terms "we," "our," "ExxonMobil Product Solutions" and "ExxonMobil" are each used for convenience, and may include any one or more of ExxonMobil Product Solutions Company, Exxon Mobil Corporation, or any affiliate either directly or indirectly stewarded.

# BARRIER FLEX<sup>®</sup> NINE

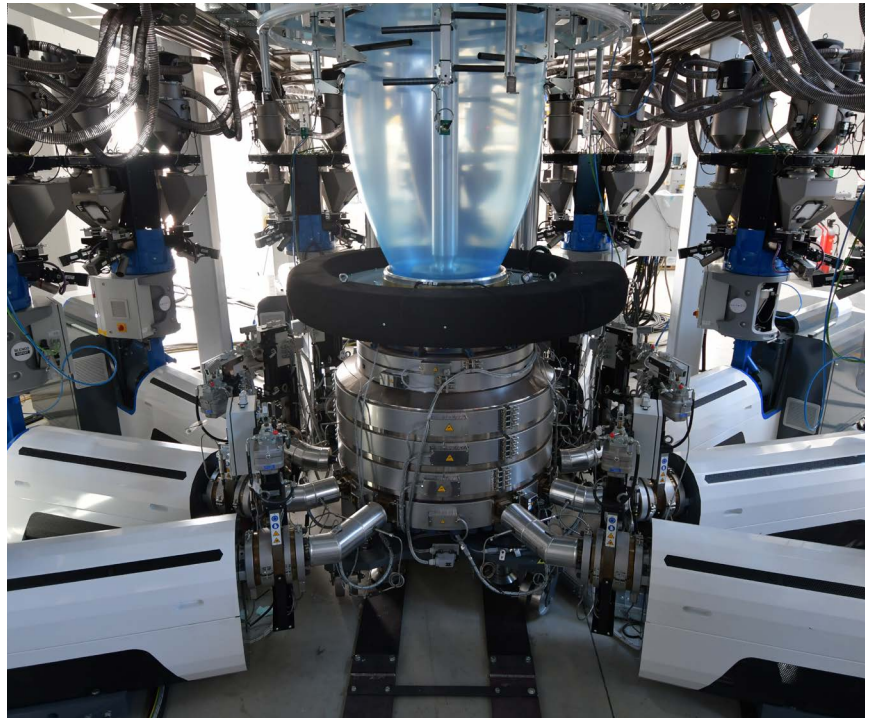
## BarrierFlex<sup>®</sup> Nine | 9-layer co-extrusion blown film line

### Line configuration:

- Loss-in-weight continuous dosing system
- 9x extruders Ø 50 mm
- Co-extrusion 9-layer die head with installed die Ø 400 mm
- High efficiency double-flow cooling ring with automatic Venturi control
- Total thickness measuring unit and barrier layer discrimination
- Rotating haul-off 2200 mm roller width with carbon fibre rollers and side guides
- Double station face-to-face gap winder with automatic reel extraction system

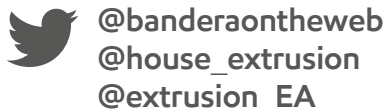
### Technical data:

- Applications: barrier film, lamination film, stand-up pouch film, general packaging film
- Lay-flat: up to 2000 mm trimmed
- Thickness range: from 20 up to 200 µm
- Output: 400 kg/h for PE film, 350 kg/h for barrier film



Costruzioni Meccaniche Luigi Bandera S.p.A. at  
K2022: Hall 17 / C06 - C07

Follow Bandera on:



For general information:  
visit [www.luigibandera.com](http://www.luigibandera.com) or contact  
[m.gambarotto@lbandera.com](mailto:m.gambarotto@lbandera.com)